



Mantles

CMU, EM Series, Digi-Mantles

We have an extensive range of heating mantles, including CMU Electromantles with metal cases and EM Electromantles with polypropylene cases, some models offering optional stirring functionality, catering for various round bottom flask capacities and being able to accommodate funnels. Digi-Mantles offer accurate electronic control of both heating and stirring and their modular inter-changeable design ensures that the same base controller can accept different-sized heating mantles. Our Multi (Extraction) Mantles can heat between 3 and 6 round bottom flasks simultaneously, providing stirring too if desired. Although mainly used for extraction, they can be used as a space-saving apparatus for heating multiple flasks in any laboratory.

| | |
|----------------|----------------------------|
| Page 6 | Electromantle Guide |
| Page 7 | CMU Metal Electromantles |
| Page 15 | Digi-Mantles |
| Page 19 | EM Electromantles |
| Page 25 | Multi (Extraction) Mantles |
| Page 31 | Electric Bunsen |

Find out more! Please scan the QR/Mobile Tag with your smartphone for more information



Electromantle Guide

The Electrothermal series of heating mantles has been specifically designed to provide a comprehensive answer to heating fluids in round bottom flasks in the modern laboratory.

Polypropylene Case

| Electromantle Series | EM | EMA | EMV | EMX Spill-proof |
|------------------------|------------------------------|--------------------|--|--------------------|
| Functions | Heating | Heating & Stirring | Heating: V-shaped for 60° funnels, round bottom & pear shaped flasks | |
| Flask Size (ml) | | | | |
| 10 - 50 | | | • | |
| 50 | • | • | | |
| 100 | • | • | | |
| 100 - 250 | | | • | |
| 250 | • | • | | |
| 500 | • | • | | |
| 500 - 1000 | | | • | • |
| 1000 | • | • | | |
| 2000 | • | • | | |
| 2000 - 5000 | | | • | • |
| 3000 | • | | | |
| 5000 | • | | | |
| Temperature range | Ambient to 450°C for element | | | |
| Max. Stirring Rate | 520rpm | | | |
| Certifications | CE approved | | | |

Aluminium Case

| Electromantle Series | CMU | CMUT Controlled or Uncontrolled | CMUA | CMUV Controlled or Uncontrolled | Digi-Mantles |
|------------------------|--------------------------------------|---------------------------------------|--------------------|---|--------------------|
| Functions | Heating | Heating | Heating & Stirring | Heating <small>(V-shaped for 60° funnels, round bottom & pear-shaped flasks)</small> | Heating & Stirring |
| Flask Size (ml) | | | | | |
| 50 | • | | • | | |
| 100 | • | | • | | |
| 250 | • | | • | | • |
| 250 - 1000 | | • | | | |
| 500 | • | | • | | • |
| 1000 | • | | • | | • |
| 2000 | • | | • | | |
| 3000 | • | | • | | |
| 5000 | • | | • | | |
| 10000 | | | | • | |
| 12000 | | | | • | |
| 20000 - 22000 | | | | • | |
| Temperature range | Ambient to 450°C for element | | | | Ambient to 450°C |
| Max. Stirring Rate | 2000rpm | | | | 2000rpm |
| Certifications | CE and CSA approved; (for 115V only) | | | | |

Note: All units have 3 electrical choices, just add suffix X1 to the catalogue number for 115V, X6 for EU Plug 230V
 Controllers: For remote energy control use MC242, for remote temperature use MC810B



Metal Electromantles

CMU Series

The Electrothermal series of heating mantles has been specifically designed to provide a comprehensive answer to heating fluids in round bottom flasks in the modern laboratory.

| | |
|----------------|---------------------------------|
| Page 8 | CMU Uncontrolled Electromantles |
| Page 10 | CMU Controlled Electromantles |
| Page 11 | CMUT Electromantles |
| Page 12 | CMUA Stirring Electromantles |
| Page 14 | CMUV Electromantles |

Find out more! Please scan the QR/Mobile Tag with your smartphone for more information



CMU

Uncontrolled Mantles

CMU Uncontrolled Electromantles are used in wet chemistry to heat liquids in round bottom flasks. The metal case is designed to remain "cool-to-the-touch" when in operation. Electrothermal heating mantles have a grounded stainless steel earth screen covering the element and are double fused for added safety. The CMU Electromantles are CE and CSA approved for 115V models.

Technical Specification

| | |
|-------------------------|-----------------------------|
| Material | Aluminum powder-coated case |
| Max Element Temperature | 450°C |

50ml - 250ml Ordering Information

| | |
|----------------------------|-----------------|
| Dimensions (d x w x h), mm | 175 x 175 x 150 |
| Shipping Weight, kg | 0.75 |

| Model | Capacity | Electrical Requirements |
|--------------|----------|-------------------------|
| CMU0050/E | 50ml | 230V 50/60Hz, 75W |
| CMU0050/EX1 | 50ml | 115V 50/60Hz, 75W |
| CMU0050/EX6* | 50ml | 230V 50/60Hz, 75W |
| CMU0100/E | 100ml | 230V 50/60Hz, 100W |
| CMU0100/EX1 | 100ml | 115V 50/60Hz, 100W |
| CMU0100/EX6* | 100ml | 230V 50/60Hz, 100W |
| CMU0250/E | 250ml | 230V 50/60Hz, 200W |
| CMU0250/EX1 | 250ml | 115V 50/60Hz, 200W |
| CMU0250/EX6* | 250ml | 230V 50/60Hz, 200W |

500ml - 1000ml Ordering Information

| | |
|----------------------------|-----------------|
| Dimensions (d x w x h), mm | 220 x 220 x 170 |
| Shipping Weight, kg | 1.5 |

| Model | Capacity | Electrical Requirements |
|--------------|----------|-------------------------|
| CMU0500/E | 500ml | 230V 50/60Hz, 280W |
| CMU0500/EX1 | 500ml | 115V 50/60Hz, 280W |
| CMU0500/EX6* | 500ml | 230V 50/60Hz, 280W |
| CMU1000/E | 1000ml | 230V 50/60Hz 380W |
| CMU1000/EX1 | 1000ml | 115V 50/60Hz, 380W |
| CMU1000/EX6* | 1000ml | 230V 50/60Hz, 380W |

*230V models with X6 suffix come with EU plug fitting

Key Features

- Valuable for fume hood or remote working
- Must be used with a controller; the MC5 & MC242 Controllers are our recommended ones
- Round bottom flask capacity of between 50ml - 5000ml
- "Cool-to-the-touch" design
- Element temperature up to 450°C
- Indicator lamps for power and heater operation
- Replaceable insulated heater cartridge
- An easy to clean, powder coated aluminium outer casing
- Non-skid feet and support rod clamps (not including support rod)
- Added safety features such as a grounded earth screen and double fuses
- CSA approved for 115V models



CMU
Uncontrolled Mantle

Uncontrolled Mantles

2000ml - 5000ml Ordering Information

Dimensions (d x w x h), mm 320 x 320 x 220
 Shipping Weight, kg 2.75

| Model | Capacity | Electrical Requirements |
|--------------|----------|-------------------------|
| CMU2000/E | 2000ml | 230V 50/60Hz, 500W |
| CMU2000/EX1 | 2000ml | 115V 50/60Hz, 500W |
| CMU2000/EX6* | 2000ml | 230V 50/60Hz, 500W |
| CMU3000/E | 3000ml | 230V 50/60Hz, 500W |
| CMU3000/EX1 | 3000ml | 115V 50/60Hz, 500W |
| CMU3000/EX6* | 3000ml | 230V 50/60Hz, 500W |
| CMU5000/E | 5000ml | 230V 50/60Hz, 800W |
| CMU5000/EX1 | 5000ml | 115V 50/60Hz, 800W |
| CMU5000/EX6* | 5000ml | 230V 50/60Hz, 800W |

CMU
Uncontrolled Mantle



Controller

Uncontrolled CMU Electromantles are designed for use with the MC5 Controller. This may be valuable when remote working is preferred, for example when experiments are being conducted in fume hoods.

Ordering Information

| Model | Electrical Requirement |
|--------|------------------------|
| MC5 | 230V, 50/60Hz, 800W |
| MC5X1 | 115V, 50/60Hz, 460W |
| MC5X6* | 230V, 50/60Hz, 800W |

*Comes with EU Plug fitting

MC5
Controller



CMU

Controlled Mantles

Electrothermal's metal-cased CMU Electromantles are the culmination of years of experience and continuous design improvement. These well-established products are used throughout many industries for a huge variety of applications. Today, we can confidently guarantee to give you quality products whose reliability and safety continue to make them market leaders.

50ml - 250ml Ordering Information

Dimensions (d x w x h), mm 175 x 175 x 150
Shipping Weight, kg 0.75

| Model | Capacity | Electrical Requirements |
|--------------|----------|-----------------------------|
| CMU0050/CE | 50ml | 230V 50/60Hz, 75W |
| CMU0050/CEX1 | 50ml | 115V 50/60Hz, 75W |
| CMU0050/CEX6 | 50ml | 230V 50/60Hz, 75W, EU Plug |
| CMU0100/CE | 100ml | 230V 50/60Hz, 100W |
| CMU0100/CEX1 | 100ml | 115V 50/60Hz, 100W |
| CMU0100/CEX6 | 100ml | 230V 50/60Hz, 100W, EU Plug |
| CMU0250/CE | 250ml | 230V 50/60Hz, 200W |
| CMU0250/CEX1 | 250ml | 115V 50/60Hz, 200W |
| CMU0250/CEX6 | 250ml | 230V 50/60Hz, 200W, EU Plug |

500ml - 1000ml Ordering Information

Dimensions (d x w x h), mm 220 x 220 x 170
Shipping Weight, kg 1.5

| Model | Capacity | Electrical Requirements |
|--------------|----------|-----------------------------|
| CMU0500/CE | 500ml | 230V 50/60Hz, 280W |
| CMU0500/CEX1 | 500ml | 115V 50/60Hz, 280W |
| CMU0500/CEX6 | 500ml | 230V 50/60Hz, 280W, EU Plug |
| CMU1000/CE | 1000ml | 230V 50/60Hz 380W |
| CMU1000/CEX1 | 1000ml | 115V 50/60Hz, 380W |
| CMU1000/CEX6 | 1000ml | 230V 50/60Hz, 380W, EU Plug |

2000ml - 5000ml Ordering Information

Dimensions (d x w x h), mm 320 x 320 x 220
Shipping Weight, kg 2.75

| Model | Capacity | Electrical Requirements |
|--------------|----------|-----------------------------|
| CMU2000/CE | 2000ml | 230V 50/60Hz, 500W |
| CMU2000/CEX1 | 2000ml | 115V 50/60Hz, 500W |
| CMU2000/CEX6 | 2000ml | 230V 50/60HZ, 500W, EU Plug |
| CMU3000/CE | 3000ml | 230V 50/60Hz, 500W |
| CMU3000/CEX1 | 3000ml | 115V 50/60Hz, 500W |
| CMU3000/CEX6 | 3000ml | 230V 50/60HZ, 500W, EU Plug |
| CMU5000/CE | 5000ml | 230V 50/60Hz, 800W |
| CMU5000/CEX1 | 5000ml | 115V 50/60Hz, 800W |
| CMU5000/CEX6 | 5000ml | 230V 50/60Hz, 800W, EU Plug |

Key Features

- Round bottom flask capacity of between 50ml - 5000ml
- "Cool-to-the-touch" design
- Element temperature up to 450°C
- Built-in energy regulator
- Indicator lamps for power and heater operation
- Replaceable insulated heater cartridge
- An easy to clean, powder coated aluminium outer casing
- Non-skid feet and support rod clamps (not including support rod)
- Added safety features such as a grounded earth screen and double fuses
- CSA approved for 115V models

CMU

Controlled Mantles



Key Features

- Multiple volume round bottom flask capacity of between 250ml - 1000ml
- "Cool-to-the-touch" design
- Element temperature up to 450°C
- Built-in energy regulator
- Indicator lamps for power and heater operation
- Replaceable insulated heater cartridge
- An easy to clean, powder coated aluminium outer casing
- Non-skid feet and support rod clamps (not including support rod)
- Added safety features such as a grounded earth screen and double fuses
- CSA approved for 115V models

CMUT

Multiple volume Electromantle



CMUT

Multiple volume Electromantle

The CMUT Electromantle is a multiple volume CMU Electromantle, able to accommodate round bottom flasks of between 250ml to 1000ml capacity. Its key features are otherwise the same as for the CMU Electromantle.

Robust and economical

You can rely on CMU Electromantles to be the heating workhorse within your laboratory: They are economical to run, robust and easy to use, and our wide range of products caters for most sizes, making them flexible enough to meet almost all of your laboratory's heating requirements. Larger capacity products have multiple heating elements to ensure a more even and accurate heat transfer and the CMUT Electromantle has 2 separate circuits for this.

Ordering Information

Dimensions (d x w x h), mm 220 x 220 x 170
Shipping Weight, kg 1.5

| Model | Capacity | Electrical Requirements |
|----------------|-------------|-------------------------|
| CMUT1000/CE | 250- 1000ml | 230V 50/50Hz, 300W |
| CMUT1000/CEX1 | 250- 1000ml | 115V 50/60Hz, 300W |
| CMUT1000/CEX6* | 250- 1000ml | 230V, 50/60Hz, 300W |

*NOTE: Codes ending with the suffix CEX6 come with EU Plug fitting

CMUA

Stirring Electromantles

The CMUA Stirring Electromantle shares all the excellent features of the CMU Electromantle but with the added functionality of magnetic stirring. For convenience and safety, the electric circuitry for stirring is built into the base of the heater, enabling powerful stirring over a wide range of solution volumes and viscosities using a magnetic stir bar.

Magnetic Stirring

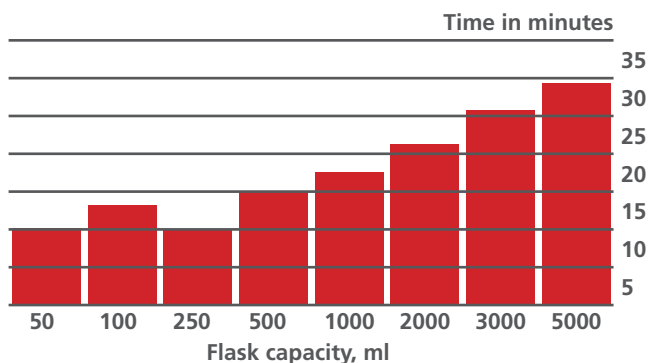
Stirring operation is simply achieved by placing the correct style and sized magnetic stir bar into the flask, selecting the minimum speed on the stirring dial control and then ramping up slowly to the required speed. The correct style and size of stir bar is determined according to the flask volume and the viscosity of its contents.

Stir speed is bi-directional and easily adjustable, and as an added feature, there is an auto-recapture switch fitted. Occasionally, the magnetic coupling to the stir bar may be interrupted and the stirring motion may be temporarily lost. Should there be a need to re-activate stirring, this can be quickly remedied by reducing the stir speed and then activating the auto-recapture switch; normal stirring can then be resumed at the desired speed.

Time required for boiling

The bar graph illustrates the time required for a half filled flask of water to reach boiling point in each of the flask capacities. For all the boiling tests the ambient temperature was 17°C.

Maximum element temp: 450°C
Voltage: 115V or 230V AC
Wattage: Nominal wattage of each flask capacity at rated voltage



Key Features

- Round bottom flask capacity of between 50ml- 5000ml
- Stirring speed up to 2000rpm
- Auto-recapture of magnetic stir bar; simple switch to re-activate stirring
- "Cool-to-the-touch" design
- Element temperature up to 450°C
- Built-in energy regulator
- Indicator lamps for power and heater operation
- Replaceable insulated heater & stirring cartridge
- An easy to clean, powder coated aluminium outer casing
- Non-skid feet and support rod clamps (not including support rod)
- Added safety features such as a grounded earth screen and double fuses
- CSA approved for 115V models

CMUA



50ml - 250ml Ordering Information

| | |
|----------------------------|-----------------|
| Dimensions (d x w x h), mm | 175 x 175 x 150 |
| Shipping Weight, kg | 0.75 |

| Model | Capacity | Electrical Requirements |
|----------------|----------|-------------------------|
| CMUA0050/CE | 50ml | 230V 50/60Hz, 60W |
| CMUA0050/CEX1 | 50ml | 115V 50/60Hz, 60W |
| CMUA0050/CEX6* | 50ml | 230V 50/60Hz, 60W |
| CMUA0100/CE | 100ml | 230V 50/60Hz, 75W |
| CMUA0100/CEX1 | 100ml | 115V 50/60Hz, 75W |
| CMUA0100/CEX6* | 100ml | 230V 50/60Hz, 75W |
| CMUA0250/CE | 250ml | 230V 50/60Hz, 200W |
| CMUA0250/CEX1 | 250ml | 115V 50/60Hz, 200W |
| CMUA0250/CEX6* | 250ml | 230V 50/60Hz, 200W |

CMUA

with Glassware

500ml - 1000ml Ordering Information

| | |
|----------------------------|-----------------|
| Dimensions (d x w x h), mm | 220 x 220 x 170 |
| Shipping Weight, kg | 1.5 |

| Model | Capacity | Electrical Requirements |
|----------------|----------|-------------------------|
| CMUA0500/CE | 500ml | 230V 50/60Hz, 280W |
| CMUA0500/CEX1 | 500ml | 115V 50/60Hz, 280W |
| CMUA0500/CEX6* | 500ml | 230V 50/60Hz, 280W |
| CMUA1000/CE | 1000ml | 230V 50/60Hz, 380W |
| CMUA1000/CEX1 | 1000ml | 115V 50/60Hz, 380W |
| CMUA1000/CEX6* | 1000ml | 230V 50/60Hz, 380W |

2000ml - 5000ml Ordering Information

| | |
|----------------------------|-----------------|
| Dimensions (d x w x h), mm | 320 x 320 x 220 |
| Shipping Weight, kg | 2.75 |

| Model | Capacity | Electrical Requirements |
|----------------|----------|-------------------------|
| CMUA2000/CE | 2000ml | 230V 50/60Hz, 500W |
| CMUA2000/CEX1 | 2000ml | 115V 50/60Hz, 500W |
| CMUA2000/CEX6* | 2000ml | 230V 50/60Hz, 500W |
| CMUA3000/CE | 3000ml | 230V 50/60Hz, 500W |
| CMUA3000/CEX1 | 3000ml | 115V 50/60Hz, 500W |
| CMUA3000/CEX6* | 3000ml | 230V 50/60Hz, 500W |
| CMUA5000/CE | 5000ml | 230V 50/60Hz, 800W |
| CMUA5000/CEX1 | 5000ml | 115V 50/60Hz, 800W |
| CMUA5000/CEX6* | 5000ml | 230V 50/60Hz, 800W |

*NOTE: Codes ending with the suffix CEX6 come with EU Plug fitting



CMUV

Stirring Electromantles

The CMUV Electromantles deliver the benefits of the CMU Electromantle, but do so for very large 60° funnels, as well as pear-shaped and round bottom flasks. This is achieved through a "V-shaped" design for the heating mantle, with funnels being accommodated through a bottom opening in the Electromantle base.

10-12 Litre Controlled CMUV Ordering Information

Dimensions (d x w x h), mm 485 x 485 x 300
Shipping Weight, kg 6

| Model | Capacity | Electrical Requirements |
|--------------|----------|-------------------------|
| CMUV10/CL | 10L | 230V 50/60Hz, 2000W |
| CMUV10/CLX1 | 10L | 115V 50/60Hz, 2000W |
| CMUV10/CLX6* | 10L | 230V 50/60Hz, 2000W |
| CMUV12/CL | 12L | 230V 50/60Hz, 2000W |
| CMUV12/CLX1 | 12L | 115V 50/60Hz, 2000W |
| CMUV12/CLX6* | 12L | 230V 50/60Hz, 2000W |

20-22 Litre Controlled CMUV Ordering Information

Dimensions (d x w x h), mm 485 x 485 x 300
Shipping Weight, kg 8.5

| Model | Capacity | Electrical Requirements |
|--------------|-----------|-------------------------|
| CMUV22/CL | 20 to 22L | 230V 50/60Hz, 3000W |
| CMUV22/CLX1 | 20 to 22L | 115V 50/60Hz, 3000W |
| CMUV22/CLX6* | 20 to 22L | 230V 50/60Hz, 3000W |

10-12 Litre Uncontrolled CMUV Ordering Information

Dimensions (d x w x h), mm 485 x 485 x 300
Shipping Weight, kg 6

| Model | Capacity | Electrical Requirements |
|-------------|----------|-------------------------|
| CMUV10/L | 10L | 230V 50/60Hz, 2000W |
| CMUV10/LX1 | 10L | 115V 50/60Hz, 2000W |
| CMUV10/LX6* | 10L | 230V 50/60Hz, 2000W |
| CMUV12/L | 12L | 230V 50/60Hz, 2000W |
| CMUV12/LX1 | 12L | 115V 50/60Hz, 2000W |
| CMUV12/LX6* | 12L | 230V 50/60Hz, 2000W |

20-22 Litre Uncontrolled CMUV Ordering Information

Dimensions (d x w x h), mm 485 x 485 x 300
Shipping Weight, kg 8.5

| Model | Capacity | Electrical Requirements |
|-------------|-----------|-------------------------|
| CMUV22/L | 20 to 22L | 230V 50/60Hz, 3000W |
| CMUV22/LX1 | 20 to 22L | 115V 50/60Hz, 3000W |
| CMUV22/LX6* | 20 to 22L | 230V 50/60Hz, 3000W |

*Add X6 suffix for 230V with EU plug

Key Features

- Accepts 60° funnels
- Accommodates pear-shaped and round bottom flasks
- Large flask/funnel capacities of between 10 to 22 litres
- Complete control of heating is provided by 3 separate electrical circuits that enable independent top, middle and bottom heating of flasks, each controlled with its own dial switch
- Spill-proof protection against electric shocks via a stainless steel screen between the flask and the heating element
- Available with and without controls
- Controller available for uncontrolled model
- "Cool-to-the-touch" design
- Element temperature up to 450°C
- Indicator lamps for power and heater operation
- Replaceable insulated heater cartridge
- An easy to clean, powder coated aluminium outer casing
- Non-skid feet and 3 support rod clamps (not including support rod)
- Added safety features such as a grounded earth screen and double fuses
- CSA approved for 115V models





Digi-Mantles

Digital heating and stirring

Digi-Mantles enable a flask of 250ml, 500ml or 1000ml capacity to be heated and stirred through precise electronic control. They have a modular design which allows heating cartridges of different sizes to be interchanged using the same OMCA digital controller as a base, which makes the Digi-Mantles a very cost-effective and space-saving option.

Page 16 OMCA Digi-Mantles

Find out more! Please scan the QR/Mobile Tag with your smartphone for more information



OMCA Digi-Mantle

Digital heating and stirring mantle

Digi-Mantles enable a flask of 250ml, 500ml or 1000ml capacity to be stirred and heated up to an element temperature of 450°C through precise electronic control, giving an accurate measure of temperature and stirring. The modular design allows heating cartridges of different sizes to be interchanged using the same OMCA digital controller as a base, which makes the Digi-Mantles a very cost-effective option.

Heater Cartridge

The heater cartridge ensures that the temperature is uniformly distributed across the flask. Even with the element temperature at 450°C, the outside of the heater cartridge remains “cool-to-the-touch” due to a continuous air flow through ventilation slots beneath and around the rim of the case.

The heating cartridge comes in 3 sizes for heating flasks of 250ml (OMCA0250), 500ml (OMCA0500) and 1000ml (OMCA1000) capacity.

OMCA Controller

Used to control both temperature and stirring speed independently, the OMCA digital controller has a revolutionary CTC (Capacitance Touch Control) panel, which is both easy to read and use, and you can quickly set the required temperature and stir speed using the up/down arrows. The control panel has separate indicator lights for the power, heater and stirrer functions, along with a 2 x 16 digit display indicating the actual temperature from ambient to 450°C (max element temperature). Stirring speeds from 100 to 2000rpm are obtained by lightly touching the stirrer speed keys.

Temperature Control

Heating is controlled by a modern state of the art microprocessor, which displays the heat setting as a percentage of the total power. An optional PT100 temperature probe may be used to gauge the temperature of the flask contents more accurately; the temperature probe's heating is controlled via the temperature feedback circuit and the actual temperature is displayed. The temperature probe operates up to 250°C.

Key Features

- Same OMCA controller accommodates different capacity heating cartridges, ie. interchangeable design
- Round bottom flask capacity of between 250ml - 1000ml
- “Cool-to-the-touch” design
- Greater stirring stability and speeds from 100 to 2000rpm
- Controller with display menus and touch pad interface
- Indicator lights for power, stirrer and heater operation
- Support rod clamps



OMCA Digi-Mantle

Digital heating and stirring mantle

Improved Stirring

The OMCA digital controller and motor arrangement has recently been upgraded to allow for accurate low speed stirring control and higher stirring speeds. Uniform stirring is provided via a motorised rotating magnet assembly positioned to provide maximum flux linkage to rotate the stirrer bars in each reaction vessel.

Technical Information

| Model | Digi-Mantle 250 | Digi-Mantle 500 | Digi-Mantle 1000 |
|------------------------------|------------------|------------------|------------------|
| Catalogue number | OMCA0250* | OMCA0500* | OMCA1000* |
| Voltage | 230V & 115V | 230V & 115V | 230V & 115V |
| Flask capacity | 250ml | 500ml | 1000ml |
| Controlled block temperature | Ambient | Ambient | Ambient |
| Temperature range | Ambient to 450°C | Ambient to 450°C | Ambient to 450°C |
| Stir speed range, rpm | 100 - 2000 | 100 - 2000 | 100 - 2000 |
| Dimensions (d x w x h), mm | 300 x 300 x 650 | 300 x 300 x 650 | 300 x 300 x 650 |
| Shipping Weight, kg | 3.1 | 3.1 | 3.1 |

Ordering Information

| Model | Description |
|-----------|---|
| OMCA* | Digi-Mantle digital controller for temperature and stirring |
| OMCA0250* | Digi-Mantle heating cartridge kit (250ml capacity) |
| OMCA0500* | Digi-Mantle heating cartridge kit (500ml capacity) |
| OMCA1000* | Digi-Mantle heating cartridge kit (1000ml capacity) |
| AZ140940 | Temperature probe (thermocouple) |
| OM0250 | Replacement 250ml Digi-Mantle heater cartridge |
| OM0500 | Replacement 500ml Digi-Mantle heater cartridge |
| OM1000 | Replacement 1000ml Digi-Mantle heater cartridge |

*Add suffixes: X1 for 115V; X6 for 230V with EU Plug

For all your heating, cooling and stirring needs

Introducing the Electrothermal range of Reaction Stations

With 70 years' experience of supplying laboratories with reliable and safe equipment, Electrothermal is a name you can trust. It is also a name that gives you results - and fast! Our STEM RS and Omni Reaction Stations can dramatically increase laboratory throughput by providing precise control of heating, cooling and stirring for between 6 to 50 vessels simultaneously, held at temperatures from $-30\text{ }^{\circ}\text{C}$ to $300\text{ }^{\circ}\text{C}$.

We have 9 Reaction Stations in our range to meet your needs, providing the same temperature and stirring rate at each position, so that you can directly compare the effects of varying reagent proportions and dilutions.

To make our reaction stations as useful as possible for you, we have a huge range of accessories which facilitate working under inert gas or vacuum conditions, and enable refluxing, phase separation, filtration and rotary evaporation to be carried out. In addition, more precise control of temperature and stirring can be achieved by using our temperature probes and wide selection of stir bars.

 **Electrothermal**
A Bibby Scientific Company

www.electrothermal.com



Find out more!!!

Please scan the QR/Mobile Tag with your smartphone for more information

A Bibby Scientific Brand





EM Electromantles

EM, EMA, EMV and EMX Series

The original "Electromantles" revolutionised round bottom flask heating by incorporating a coiled flexible heating element, which ingeniously wraps the heater around the flask to optimise heat transfer. For maximum safety, the flask is held away from direct contact with the heating element via a grounded earth screen.

This design principle has stood the test of time and has been imitated the world over. With many years of experience, Electrothermal remains at the forefront of laboratory heating and its associated controlling technology.

| | |
|----------------|--------------------|
| Page 20 | EM Electromantles |
| Page 22 | EMA Electromantles |
| Page 23 | EMV Electromantles |
| Page 24 | EMX Electromantles |

Find out more! Please scan the QR/Mobile Tag with your smartphone for more information



EM Series

Heating Electromantle

The EM Electromantle series features a durable, chemically resistant, polypropylene outer housing that minimises damage from spills. They allow maximum heat transfer with minimum risk for flask breakage.

Robust and economical

Designed with simplicity, flexibility and ease of use, the EM series Electromantle is designed to be the workhorse for your heating applications. All EMs have a built-in energy regulator with indicator lamps for power and heater operation. All mantles have support rod clamps as an integral feature and incorporate a grounded earth screen and double fuses for added safety. Larger capacity products have multiple heating elements, enabling a more even and directed transfer of heat.

50ml - 250ml Ordering Information

Dimensions (d x w x h), mm 260 x 175 x 127
Shipping Weight, kg 0.78

| Model | Capacity | Electrical Requirements |
|--------------|----------|-------------------------|
| EM0050/CE | 50ml | 230V 50/60Hz, 60W |
| EM0050/CEX1 | 50ml | 115V 50/60Hz, 70W |
| EM0050/CEX6* | 50ml | 230V 50/60Hz, 60W |
| EM0100/CE | 100ml | 230V 50/60Hz, 60W |
| EM0100/CEX1 | 100ml | 115V 50/60Hz, 70W |
| EM0100/CEX6* | 100ml | 230V 50/60Hz, 60W |
| EM0250/CE | 250ml | 230V 50/60Hz, 150W |
| EM0250/CEX1 | 250ml | 115V 50/60Hz, 150W |
| EM0250/CEX6* | 250ml | 230V 50/60Hz, 150W |

500ml - 1000ml Ordering Information

Dimensions (d x w x h),mm 310 x 238 x 145
Shipping Weight, kg 1.25

| Model | Capacity | Electrical Requirements |
|--------------|----------|-------------------------|
| EM0500/CE | 500ml | 230V 50/60Hz, 200W |
| EM0500/CEX1 | 500ml | 115V 50/60Hz, 200W |
| EM0500/CEX6* | 500ml | 230V 50/60Hz, 200W |
| EM1000/CE | 1000ml | 230V 50/60Hz, 300W |
| EM1000/CEX1 | 1000ml | 115V 50/60Hz, 300W |
| EM1000/CEX6* | 1000ml | 230V 50/60Hz, 300W |

Key Features

- Cool-to-the-touch design
- Max element temperature 450°C
- Built-in energy regulator
- Model EME5000/CE has 2 circuits for upper and lower level heating
- Replaceable insulated heater cartridge
- Indicator lamps for power and heater operation
- A chemically resistant polypropylene outer casing
- A grounded earth screen and double fuses for added safety
- Clamps for 1.3cm diameter support (but not including support rods)



EM Series

EM Series

Heating Electromantle

2000ml - 5000ml Ordering Information

| | |
|----------------------------|-----------------|
| Dimensions (d x w x h), mm | 400 x 350 x 190 |
| Shipping Weight, kg | 2.58 |

| Model | Capacity | Electrical Requirements |
|--------------|----------|-------------------------|
| EM2000/CE | 2000ml | 230V 50/60Hz, 500W |
| EM2000/CEX1 | 2000ml | 115V 50/60Hz, 500W |
| EM2000/CEX6* | 2000ml | 230V 50/60Hz, 500W |
| EM3000/CE | 3000ml | 230V 50/60Hz, 500W |
| EM3000/CEX1 | 3000ml | 115V 50/60Hz, 500W |
| EM3000/CEX6* | 3000ml | 230V 50/60Hz, 500W |
| EM5000/CE | 5000ml | 230V 50/60Hz, 800W |
| EM5000/CEX1 | 5000ml | 115V 50/60Hz, 800W |
| EM5000/CEX6* | 5000ml | 230V 50/60Hz, 800W |

EM Series
with glassware

**Comes with EU Plug fitting*



EMA Series

Heating and Stirring Electromantle

The EMA Electromantle shares all the standard features of the standard EM but has the added functionality of magnetic stirring. The solid state stirring circuitry is built into the base of the main housing and provides powerful stirring over a range of capacities and viscosities. The stir speed is easily adjusted and is bi-directional. The stir bar is seldom lost due to our "auto-recapture" function.

Magnetic Stirring

The EMA stirring Electromantle has the added functionality of solution stirring which widens the range of applications. Stirring operation is simply achieved by placing the correct size bar into the flask, turning the stir control to the minimum speed and ramping up slowly. If the magnetic coupling to the stir bar is lost for any reason, the speed control should be reduced slightly and the auto-recapture switch can be activated.

50ml - 250ml Ordering Information

Dimensions (d x w x h), mm 260 x 175 x 133
Shipping Weight, kg 1.73

| Model | Capacity | Electrical Requirements |
|----------------|----------|-------------------------|
| EMA0050/CEB | 50ml | 230V 50/60Hz, 80W |
| EMA0050/CEBX1 | 50ml | 115V 50/60Hz, 96W |
| EMA0050/CEBX6* | 50ml | 230V 50/60Hz, 80W |
| EMA0100/CEB | 100ml | 230V 50/60Hz, 80W |
| EMA0100/CEBX1 | 100ml | 115V 50/60Hz, 96W |
| EMA0100/CEBX6* | 100ml | 230V 50/60Hz, 80W |
| EMA0250/CEB | 250ml | 230V 50/60Hz, 170W |
| EMA0250/CEBX1 | 250ml | 115V 50/60Hz, 210W |
| EMA0250/CEBX6* | 250ml | 230V 50/60Hz, 170W |

500ml - 1000ml Ordering Information

Dimensions (d x w x h), mm 310 x 238 x 157
Shipping Weight, kg 2.75

| Model | Capacity | Electrical Requirements |
|----------------|----------|-------------------------|
| EMA0500/CEB | 500ml | 230V 50/60Hz, 220W |
| EMA0500/CEBX1 | 500ml | 115V 50/60Hz, 270W |
| EMA0500/CEBX6* | 500ml | 230V 50/60Hz, 220W |
| EMA1000/CEB | 1000ml | 230V 50/60Hz, 320W |
| EMA1000/CEBX1 | 1000ml | 115V 50/60Hz, 400W |
| EMA1000/CEBX6* | 1000ml | 230V 50/60Hz, 320W |

2000ml Ordering Information

Dimensions (d x w x h), mm 400 x 350 x 197
Shipping Weight, kg 5.68

| Model | Capacity | Electrical Requirements |
|----------------|----------|-------------------------|
| EMA2000/CEB | 2000ml | 230V 50/60Hz, 520W |
| EMA2000/CEBX1 | 2000ml | 115V 50/60Hz, 670W |
| EMA2000/CEBX6* | 2000ml | 230V 50/60Hz, 520W |

*Comes with EU Plug fitting

Key Features

- Accepts flasks from 50ml to 2 litre capacity
- Bi-directional stirring speeds up to 520rpm
- Stir bar "auto-recapture" function
- 'Cool-to-the-touch' design
- Element temperature 450°C
- Built-in energy regulator
- Replaceable insulated heater cartridge
- A chemically resistant polypropylene outer casing
- A grounded earth screen and double fuses for added safety
- Clamps for 1.3cm diameter supports (not including support rods)



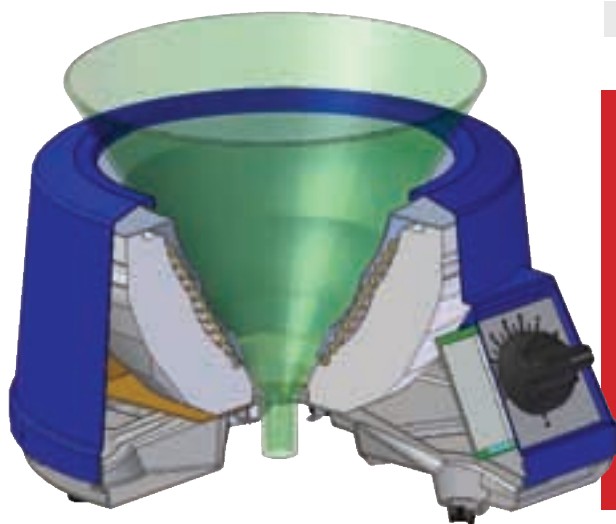
EMA Series

Key Features

- Bottom opening accommodates round bottom & pear-shaped flasks and 60° funnels
- Capacity between 10ml to 5 litres
- Coiled heating element, suspended within a thermal insulating cartridge, provides maximum heat transfer and support
- Cool-to-the-touch design
- Max element temperature of 450°C
- Built-in energy regulator
- Replaceable insulated heater cartridge
- Indicator lamps for power and heater operation
- A chemically resistant polypropylene outer casing
- A grounded earth screen and double fuses for added safety
- Clamps for 1.3cm diameter supports (not including support rods)



EMV Series



EMV Series

V-Shaped Electromantle

Spill-proof Mantles and V-Shaped Mantles may accommodate 60° funnels, pear-shaped or round-bottom flasks. They have been designed to accept a large range of flask and funnel sizes for added flexibility.

Stainless steel screen on all EMV models covers the heater element to protect you from shock hazards due to spills or flask breakage.

10ml - 50ml Ordering Information

| | |
|----------------------------|-----------------|
| Dimensions (d x w x h), mm | 260 x 175 x 127 |
| Shipping Weight, kg | 0.78 |

| Model | Capacity | Electrical Requirements |
|---------------|--------------|-------------------------|
| EMV0050/CE | 10 to 50ml | 230V 50/60Hz, 60W |
| EMV0050/CEX1 | 10 to 50ml | 115V 50/60Hz, 70W |
| EMV0050/CEX6* | 10 to 50ml | 230V 50/60Hz, 60W |
| EMV0250/CE | 100 to 250ml | 230V 50/60Hz, 150W |
| EMV0250/CEX1 | 100 to 250ml | 115V 50/60Hz, 150W |
| EMV0250/CEX6* | 100 to 250ml | 230V 50/60Hz, 150W |

500ml - 1000ml Ordering Information

| | |
|----------------------------|-----------------|
| Dimensions (d x w x h), mm | 310 x 238 x 145 |
| Shipping Weight, kg | 2.76 |

| Model | Capacity | Electrical Requirements |
|---------------|---------------|-------------------------|
| EMV1000/CE | 500 to 1000ml | 230V 50/60Hz, 300W |
| EMV1000/CEX1 | 500 to 1000ml | 115V 50/60Hz, 300W |
| EMV1000/CEX6* | 500 to 1000ml | 230V 50/60Hz, 300W |

2000ml - 5000ml Ordering Information

| | |
|----------------------------|-----------------|
| Dimensions (d x w x h), mm | 400 x 350 x 190 |
| Shipping Weight, kg | 5.96 |

| Model | Capacity | Electrical Requirements |
|---------------|----------------|-------------------------|
| EMV5000/CE | 2000 to 5000ml | 230V 50/60Hz, 800W |
| EMV5000/CEX1 | 2000 to 5000ml | 115V 50/60Hz, 800W |
| EMV5000/CEX6* | 2000 to 5000ml | 230V 50/60Hz, 800W |

*Comes with EU Plug fitting

EMX Series

Spill-proof Electromantle

Spill-proof Mantles and V-Shaped Mantles may accommodate 60° funnels, pear-shaped or round-bottom flasks. They have been designed to accept a large range of flask and funnel sizes for added flexibility.

A stainless steel liner on all EMX models provides extra electrical and mechanical protection against spills and ensures easy cleaning.

500ml - 1000ml Ordering Information

Dimensions (d x w x h), mm 310 x 238 x 145
Shipping Weight, kg 2.76

| Model | Capacity | Electrical Requirements |
|----------------|---------------|-------------------------|
| EMX1000/SCE | 500 to 1000ml | 230V 50/60Hz, 245W |
| EMX1000/SCEX1 | 500 to 1000ml | 115V 50/60Hz, 240W |
| EMX1000/SCEX6* | 500 to 1000ml | 230V 50/60Hz, 245W |

2000ml - 5000ml Ordering Information

Dimensions (d x w x h), mm 400 x 350 x 190
Shipping Weight, kg 5.96

| Model | Capacity | Electrical Requirements |
|----------------|----------------|-------------------------|
| EMX5000/SCE | 2000 to 5000ml | 230V 50/60Hz, 600W |
| EMX5000/SCEX1 | 2000 to 5000ml | 115V 50/60Hz, 600W |
| EMX5000/SCEX6* | 2000 to 5000ml | 230V 50/60Hz, 600W |

**Comes with EU Plug fitting*

Key Features

- Bottom opening accommodates round bottom & pear-shaped flasks and 60° funnels
- Capacity between 500ml to 5 litres
- Coiled heating element, suspended within a thermal insulating cartridge, provides maximum heat transfer and support
- Cool-to-the-touch design
- Max element temperature of 450°C
- Built-in energy regulator
- Replaceable insulated heater cartridge
- Indicator lamps for power and heater operation
- A chemically resistant polypropylene outer casing
- A grounded earth liner and double fuses for added safety
- Clamps for 1.3cm diameter supports (not including support rods)



EMX Series



Multi (Extraction) Mantles

EME 3. EMEA 3, EME 6 and EMEA 6 Series

The EME & EMEA Multi (Extraction) Mantles are designed to heat between 3 & 6 round bottom flasks simultaneously. They are often used for extraction, but may be used wherever heating of multiple flasks is required.

Page 26 EME 3 and EMEA 3 Multi (Extraction) Mantles

Page 28 EME 6 and EMEA 6 Multi (Extraction) Mantles

Find out more! Please scan the QR/Mobile Tag with your smartphone for more information



EME3 and EMEA3 Series

3 Recess Multi-Mantles

The Multi-Mantle with three recesses has a built-in electronic controller and offers a choice of heater only (EME3) or heater/stirrer (EMEA3) combination models. The vented case's unique air flow ensures that the case remains "cool-to-touch".

For both heater only and heater/stirrer models

- Individual built-in solid state electronic controls enable easy regulation of the heater, while removing sparking associated with mechanical switching
- 3 x 12.7mm diameter support rods are included
- Round bottom flask capacity from 100ml to 1000ml at all 3 positions
- Top cover is polypropylene and external surfaces are powder coated giving good general chemical resistance
- Coiled heating element is suspended within a thermal insulating cartridge to provide maximum heat transfer and support.
- Earth (ground) screen encloses the heater for added safety
- Individual heater cartridges are replaceable
- Neon lamps indicate when power is on and supplied to heaters and supplied to stirrers

Additionally for heater/stirrer EMEA3 models

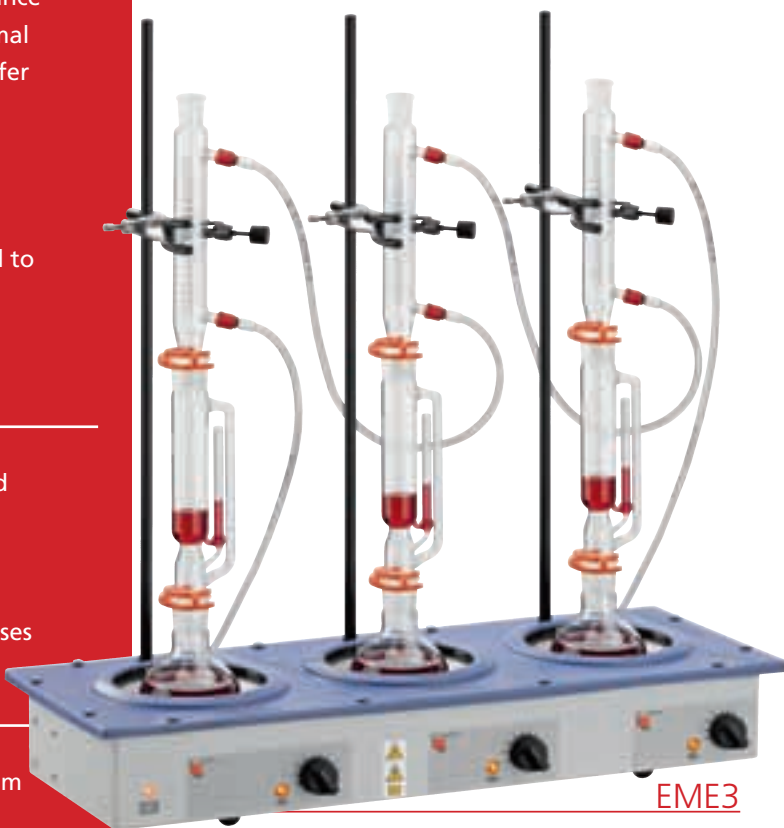
- Heater/stirrer model allows the solution to be stirred and heated simultaneously
- Stirrer models provide a choice of stirring speeds of between 50 to 1000rpm
- One stirring control operates each set of three recesses

Technical Specification

| | |
|-------------------------|--|
| Material | Polypropylene top on powder-coated aluminium |
| Max element temperature | 450°C |



EMEA3



EME3

Ordering Information

Heater models

| Model | No. of Recesses | Flask Capacity | Electrical Requirements | Dimensions (d x w x h), mm | Shipping Weight |
|-----------------|-----------------|----------------|-----------------------------|----------------------------|-----------------|
| EME3 0100/CEB | 3 | 3 x 100ml | 230V 50/60Hz, 180W | 260 x 630 x 90 | 6.2kg |
| EME3 0100/CEBX1 | 3 | 3 x 100ml | 115V 50/60Hz, 210W | 260 x 630 x 90 | 6.2kg |
| EME3 0100/CEBX6 | 3 | 3 x 100ml | 230V 50/60Hz, 180W, EU Plug | 260 x 630 x 90 | 6.2kg |
| EME3 0250/CEB | 3 | 3 x 250ml | 230V 50/60Hz, 450W | 260 x 630 x 90 | 6.2kg |
| EME3 0250/CEBX1 | 3 | 3 x 250ml | 115V 50/60Hz, 450W | 260 x 630 x 90 | 6.2kg |
| EME3 0250/CEBX6 | 3 | 3 x 250ml | 230V 50/60Hz, 450W, EU Plug | 260 x 630 x 90 | 6.2kg |
| EME3 0500/CEB | 3 | 3 x 500ml | 230V 50/60Hz, 600W | 260 x 630 x 90 | 7.4kg |
| EME3 0500/CEBX1 | 3 | 3 x 500ml | 115V 50/60Hz, 600W | 260 x 630 x 90 | 7.4kg |
| EME3 0500/CEBX6 | 3 | 3 x 500ml | 230V 50/60Hz, 600W, EU Plug | 260 x 630 x 90 | 7.4kg |
| EME3 1000/CEB | 3 | 3 x 1000ml | 230V 50/60Hz, 900W | 260 x 630 x 90 | 7.4kg |
| EME3 1000/CEBX1 | 3 | 3 x 1000ml | 115V 50/60Hz, 900W | 260 x 630 x 90 | 7.4kg |
| EME3 1000/CEBX6 | 3 | 3 x 1000ml | 230V 50/60Hz, 900W, EU Plug | 260 x 630 x 90 | 7.4kg |

Ordering Information

Heater/Stirrer models

| Model | No. of Recesses | Flask Capacity | Electrical Requirements | Dimensions (d x w x h), mm | Shipping Weight |
|-----------------|-----------------|----------------|-----------------------------|----------------------------|-----------------|
| EMEA3 0100/CE | 3 | 3 x 100ml | 230V 50/60Hz, 220W | 260 x 630 x 90 | 6.2kg |
| EMEA3 0100/CEX1 | 3 | 3 x 100ml | 115V 50/60Hz, 220W | 260 x 630 x 90 | 6.2kg |
| EMEA3 0100/CEX6 | 3 | 3 x 100ml | 230V 50/60Hz, 220W, EU Plug | 260 x 630 x 90 | 6.2kg |
| EMEA3 0250/CE | 3 | 3 x 250ml | 230V 50/60Hz, 490W | 260 x 630 x 90 | 6.2kg |
| EMEA3 0250/CEX1 | 3 | 3 x 250ml | 115V 50/60Hz, 490W | 260 x 630 x 90 | 6.2kg |
| EMEA3 0250/CEX6 | 3 | 3 x 250ml | 230V 50/60Hz, 490W, EU Plug | 260 x 630 x 90 | 6.2kg |
| EMEA3 0500/CE | 3 | 3 x 500ml | 230V 50/60Hz, 640W | 260 x 630 x 90 | 7.4kg |
| EMEA3 0500/CEX1 | 3 | 3 x 500ml | 115V 50/60Hz, 640W | 260 x 630 x 90 | 7.4kg |
| EMEA3 0500/CEX6 | 3 | 3 x 500ml | 230V 50/60Hz, 640W, EU Plug | 260 x 630 x 90 | 7.4kg |
| EMEA3 1000/CE | 3 | 3 x 1000ml | 230V 50/60Hz, 940W | 260 x 630 x 90 | 7.4kg |
| EMEA3 1000/CEX1 | 3 | 3 x 1000ml | 115V 50/60Hz, 940W | 260 x 630 x 90 | 7.4kg |
| EMEA3 1000/CEX6 | 3 | 3 x 1000ml | 230V 50/60Hz, 940W, EU Plug | 260 x 630 x 90 | 7.4kg |

EME6 and EMEA6 Series

6 Recess Multi-Mantles

The Multi-Mantle with 6 recesses has a built-in electronic controller and offers a choice of heater only (EME6) or heater/stirrer (EMEA6) combination models.

The vented case's unique air flow ensures that the case remains "cool-to-touch".

For both heater only & heater/stirrer models

- Individual built-in solid state electronic controls enable easy regulation of heater, while removing sparking associated with mechanical switching
- 3 x 12.7mm diameter support rods are included
- Round bottom flask capacity from 100ml to 1000ml at all 6 positions
- Top cover is polypropylene and external surfaces are powder coated giving good general chemical resistance
- Coiled heating element is suspended within a thermal insulating cartridge to provide maximum heat transfer and support
- Earth (ground) screen encloses the heater for added safety
- Individual heater cartridges are replaceable
- Neon lights indicate when power is on and supplied to heaters and supplied to stirrers

Additionally for heater/stirrer EMEA6 models

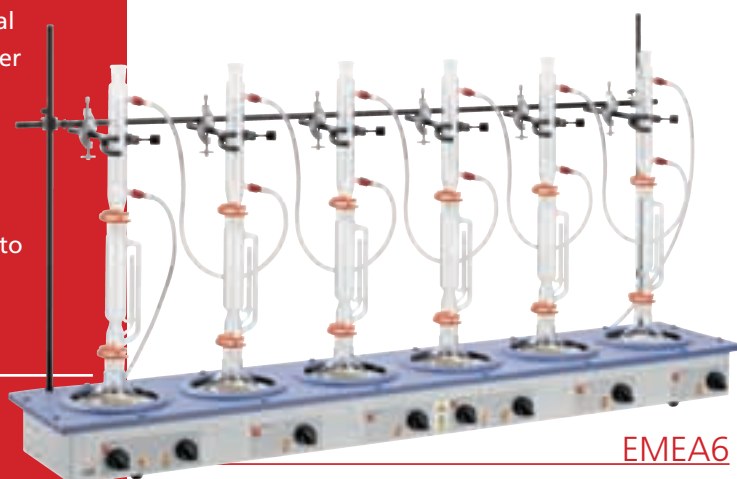
- Heater/stirrer model allows the solution to be stirred and heated simultaneously
- Includes a choice of stirring speeds of between 50 to 1000rpm
- One stirring control operates each set of six recesses

Technical Specification

| | |
|-------------------------|--|
| Material | Polypropylene top on powder-coated aluminium |
| Max element temperature | 450°C |



EME6



EMEA6

Ordering Information

Heater models

| Model | No. of Recesses | Flask Capacity | Electrical Requirements | Dimensions (d x w x h), mm | Shipping Weight |
|-----------------|-----------------|----------------|------------------------------|----------------------------|-----------------|
| EME6 0100/CEB | 6 | 6 x 100ml | 230V 50/60Hz, 420W | 260 x 1200 x 90 | 10.1kg |
| EME6 0100/CEBX1 | 6 | 6 x 100ml | 115V 50/60Hz, 360W | 260 x 1200 x 90 | 10.1kg |
| EME6 0100/CEBX6 | 6 | 6 x 100ml | 230V 50/60Hz, 420W, EU Plug | 260 x 1200 x 90 | 10.1kg |
| EME6 0250/CEB | 6 | 6 x 250ml | 230V 50/60Hz, 900W | 260 x 1200 x 90 | 10.1kg |
| EME6 0250/CEBX1 | 6 | 6 x 250ml | 115V 50/60Hz, 900W | 260 x 1200 x 90 | 10.1kg |
| EME6 0250/CEBX6 | 6 | 6 x 250ml | 230V 50/60Hz, 900W, EU Plug | 260 x 1200 x 90 | 10.1kg |
| EME6 0500/CEB | 6 | 6 x 500ml | 230V 50/60Hz, 1200W | 260 x 1200 x 90 | 12.5kg |
| EME6 0500/CEBX1 | 6 | 6 x 500ml | 115V 50/60Hz, 1200W | 260 x 1200 x 90 | 12.5kg |
| EME6 0500/CEBX6 | 6 | 6 x 500ml | 230V 50/60Hz, 1200W, EU Plug | 260 x 1200 x 90 | 12.5kg |
| EME6 1000/CEB | 6 | 6 x 1000ml | 230V 50/60Hz, 1800W | 260 x 1200 x 90 | 12.5kg |
| EME6 1000/CEBX1 | 6 | 6 x 1000ml | 115V 50/60Hz, 1800W | 260 x 1200 x 90 | 12.5kg |
| EME6 1000/CEBX6 | 6 | 6 x 1000ml | 230V 50/60Hz, 1800W, EU Plug | 260 x 1200 x 90 | 12.5kg |

Ordering Information

Heater/Stirrer models

| Model | No. of Recesses | Flask Capacity | Electrical Requirements | Dimensions (d x w x h), mm | Shipping Weight |
|-----------------|-----------------|----------------|------------------------------|----------------------------|-----------------|
| EMEA6 0100/CE | 6 | 6 x 100ml | 230V 50/60Hz, 500W | 260 x 1200 x 90 | 10.1kg |
| EMEA6 0100/CEX1 | 6 | 6 x 100ml | 115V 50/60Hz, 440W | 260 x 1200 x 90 | 10.1kg |
| EMEA6 0100/CEX6 | 6 | 6 x 100ml | 230V 50/60Hz, 500W, EU Plug | 260 x 1200 x 90 | 10.1kg |
| EMEA6 0250/CE | 6 | 6 x 250ml | 230V 50/60Hz, 980W | 260 x 1200 x 90 | 10.1kg |
| EMEA6 0250/CEX1 | 6 | 6 x 250ml | 115V 50/60Hz, 980W | 260 x 1200 x 90 | 10.1kg |
| EMEA6 0250/CEX6 | 6 | 6 x 250ml | 230V 50/60Hz, 980W, EU Plug | 260 x 1200 x 90 | 10.1kg |
| EMEA6 0500/CE | 6 | 6 x 500ml | 230V 50/60Hz, 1280W | 260 x 1200 x 90 | 12.5kg |
| EMEA6 0500/CEX1 | 6 | 6 x 500ml | 115V 50/60Hz, 1280W | 260 x 1200 x 90 | 12.5kg |
| EMEA6 0500/CEX6 | 6 | 6 x 500ml | 230V 50/60Hz, 1280W, EU Plug | 260 x 1200 x 90 | 12.5kg |
| EMEA6 1000/CE | 6 | 6 x 1000ml | 230V 50/60Hz, 1880W | 260 x 1200 x 90 | 12.5kg |
| EMEA6 1000/CEX1 | 6 | 6 x 1000ml | 115V 50/60Hz, 1880W | 260 x 1200 x 90 | 12.5kg |
| EMEA6 1000/CEX6 | 6 | 6 x 1000ml | 230V 50/60Hz, 1880W, EU Plug | 260 x 1200 x 90 | 12.5kg |